

# HWBB Appendix D

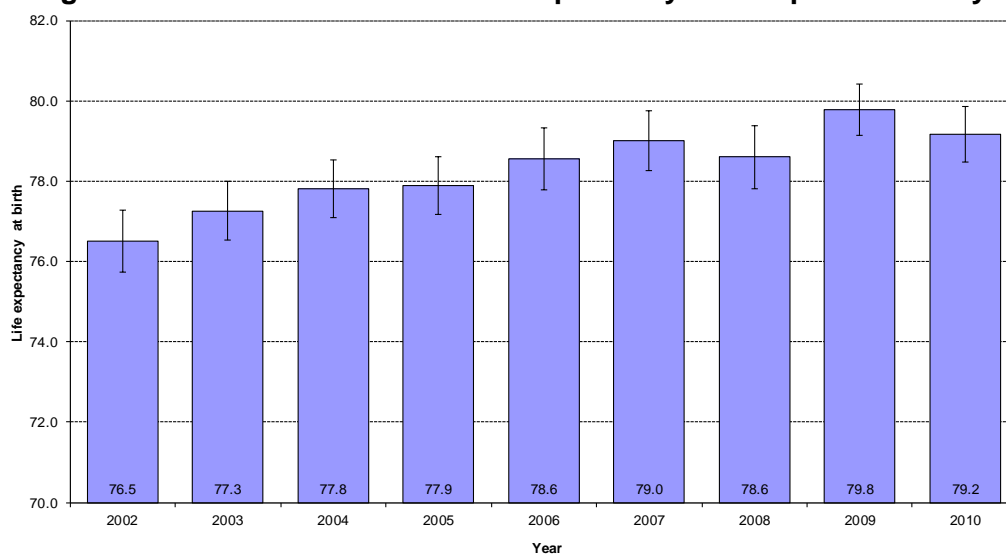
## Life Expectancy

---

### Annual trends in life expectancy

The following chart shows trends life expectancy in males in Shropshire. Overall, life expectancy rates have increased in Shropshire; however although there has been an increase, rates have remained similar since 2004.

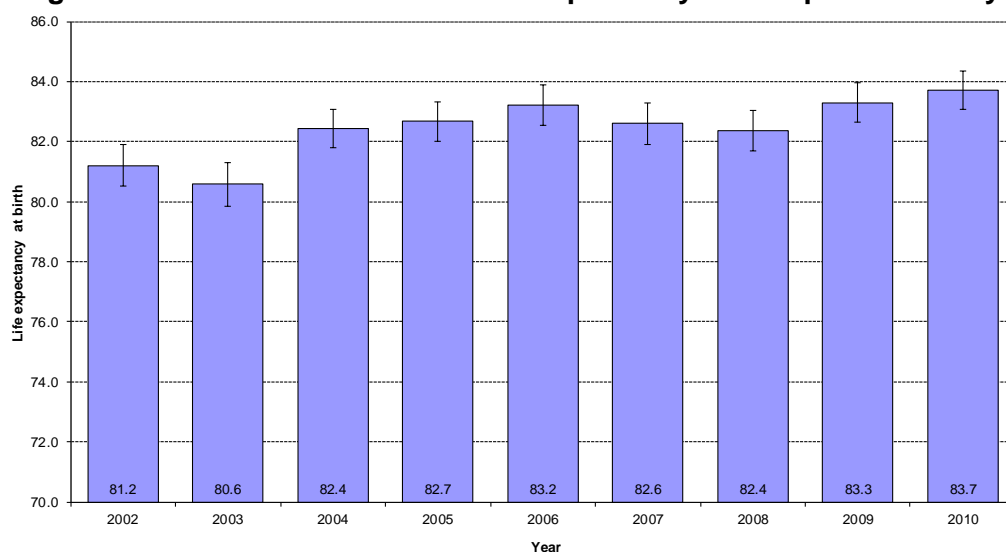
**Figure 1 Annual trends in male life expectancy in Shropshire County**



Source: Vital Statistics Table 3, ONS mid-year population estimates, National Statistics, Crown Copyright, Calculated using the SEPHO Life Expectancy Calculator

The following chart shows that life expectancy in women has also increased in Shropshire, but the rates have remained fairly static since 2004.

**Figure 2 Annual trends in female life expectancy in Shropshire County**



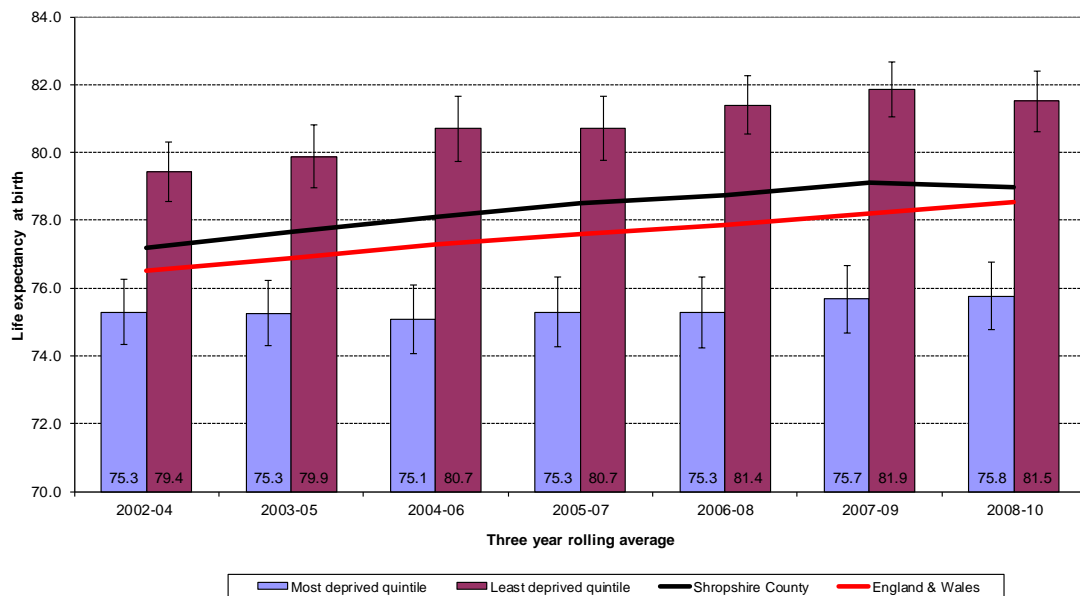
Source: Vital Statistics Table 3, ONS mid-year population estimates, National Statistics, Crown Copyright, Calculated using the SEPHO Life Expectancy Calculator

## Life expectancy and deprivation

Shropshire has significantly lower life expectancy rate for men than the England figure, although the gap between the Shropshire rate and the England rate is narrowing.

Overall, life expectancy rates have increased in Shropshire and in England; however there has been no significant change in life expectancy for males living in the most deprived fifth of areas in Shropshire since 2002-04. Males living in the least deprived fifth of areas have seen a significant increase in life expectancy since 2002-04. Life expectancy in males is higher in the least deprived areas compared to the most deprived areas.

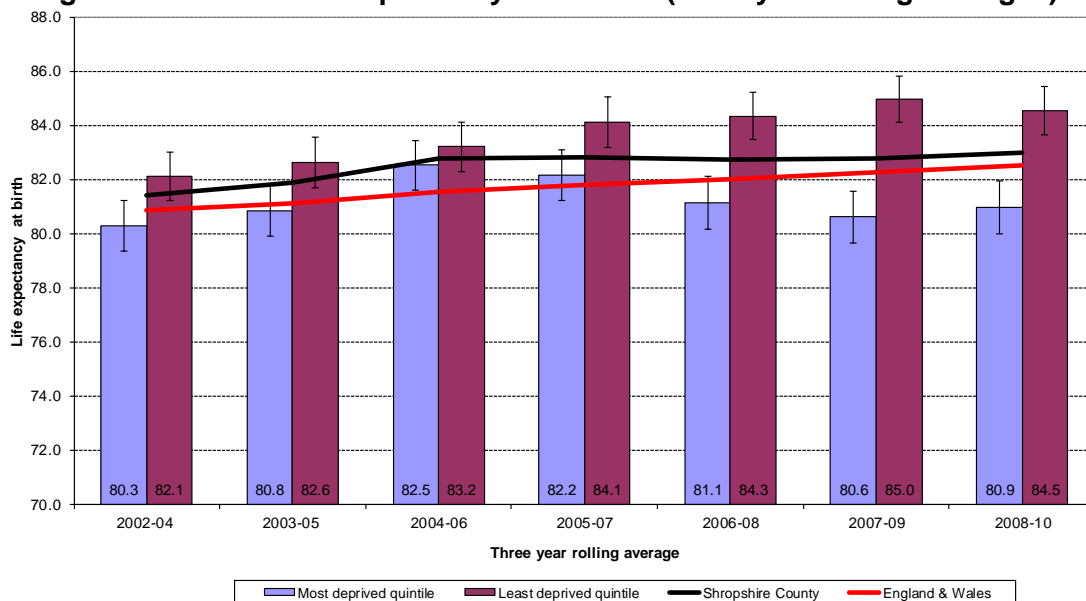
**Figure 3 Trends in life expectancy in males (three year rolling average)**



Source: Death extracts, Vital Statistics Table 3, ONS mid-year population estimates, National Statistics, Crown Copyright, Indices of Deprivation 2004, Office of the Deputy Prime Minister, Crown Copyright, Exeter System (GP Patient Registration System), Shropshire County Primary Care Trust, Calculated using the SEPHO Life Expectancy Calculator

Life expectancy rates are significantly higher in Shropshire to the England average for females. There has been an increase in life expectancy rates in women in the least deprived areas of Shropshire; however there has been no significant change in life expectancy rates in women living in the most deprived fifth of areas. There are significantly lower life expectancy rates in women living in the most deprived fifth of areas compared to those living in the least deprived fifth.

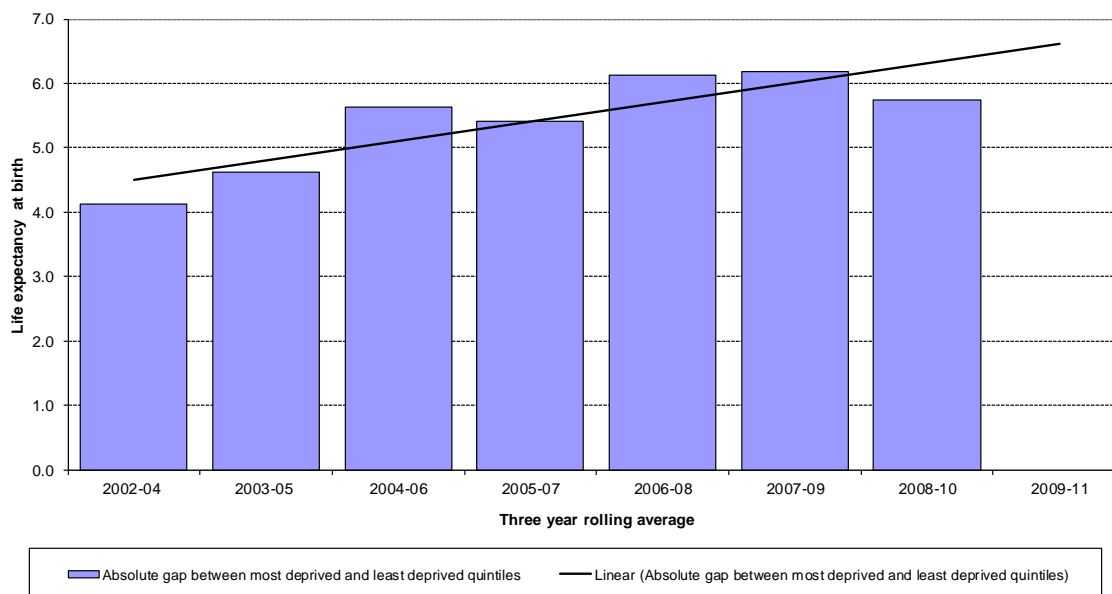
**Figure 4 Trends in life expectancy in females (three year rolling averages)**



Source: Death extracts, Vital Statistics Table 3, ONS mid-year population estimates, National Statistics, Crown Copyright, Indices of Deprivation 2004, Office of the Deputy Prime Minister, Crown Copyright, Exeter System (GP Patient Registration System), Shropshire County Primary Care Trust, Calculated using the SEPHO Life Expectancy Calculator

The following chart shows the absolute gap between the most and least deprived fifth of areas for life expectancy in men in Shropshire. The trend line shows that health inequalities are increasing in life expectancy as there has been an increase in the gap between the most deprived fifth of areas and the least deprived fifth.

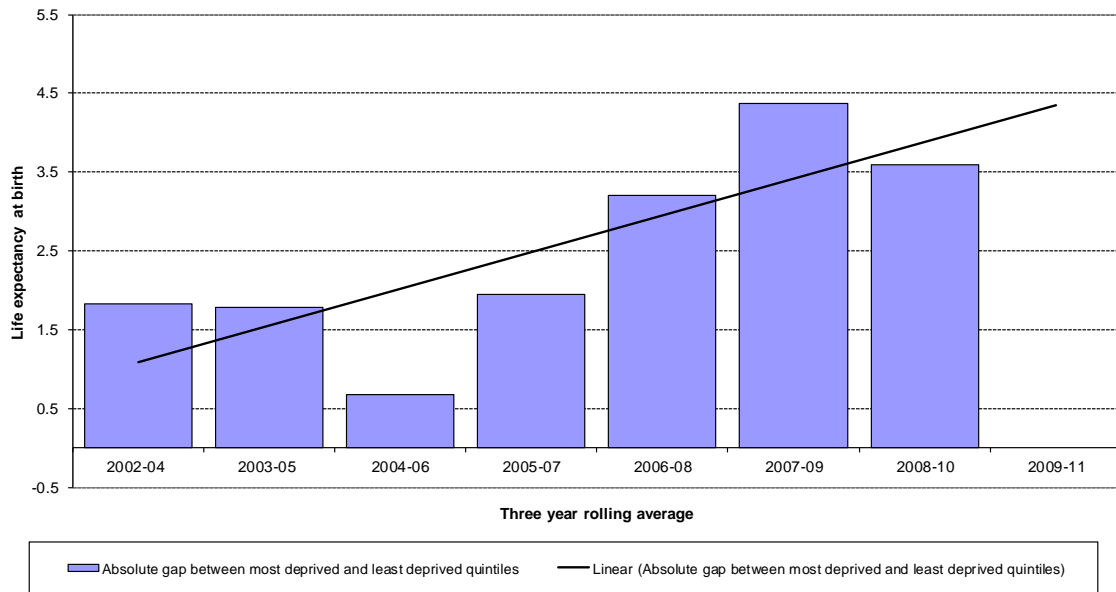
**Figure 5 Absolute gap in life expectancy between males living in the most and least deprived quintiles in Shropshire**



Source: Death extracts, Vital Statistics Table 3, ONS mid-year population estimates, National Statistics, Crown Copyright, Indices of Deprivation 2004, Office of the Deputy Prime Minister, Crown Copyright, Exeter System (GP Patient Registration System), Shropshire County Primary Care Trust, Calculated using the SEPHO Life Expectancy Calculator

The absolute gap between the most deprived and least deprived quintiles for women has also increased, indicating that health inequalities have worsened between the most and least deprived areas in Shropshire.

**Figure 6 Absolute gap in life expectancy between females living in the most and least deprived quintiles in Shropshire**

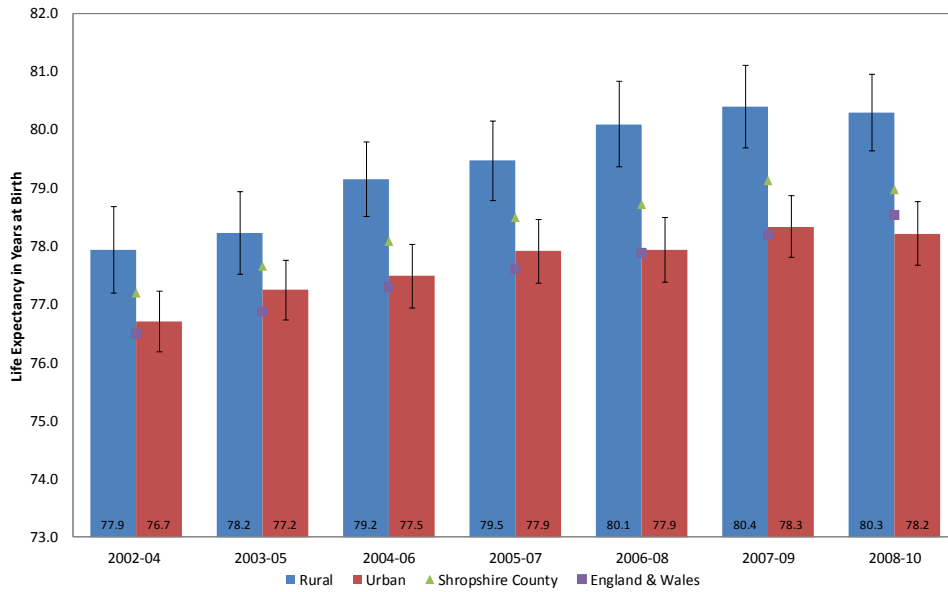


Source: Death extracts, Vital Statistics Table 3, ONS mid-year population estimates, National Statistics, Crown Copyright, Indices of Deprivation 2004, Office of the Deputy Prime Minister, Crown Copyright, Exeter System (GP Patient Registration System), Shropshire County Primary Care Trust, Calculated using the SEPHO Life Expectancy Calculator

### Life expectancy and rurality

The following chart shows life rates for men living in rural and urban areas of Shropshire. There has been a significant increase in life expectancy in both the rural and urban areas since 2002-04. Although there has been a greater rate of increase in the rural areas compared to urban areas. In 2002-04 the life expectancy rates in rural and urban areas were similar; by 2004-06 there were significantly higher rates in the urban areas.

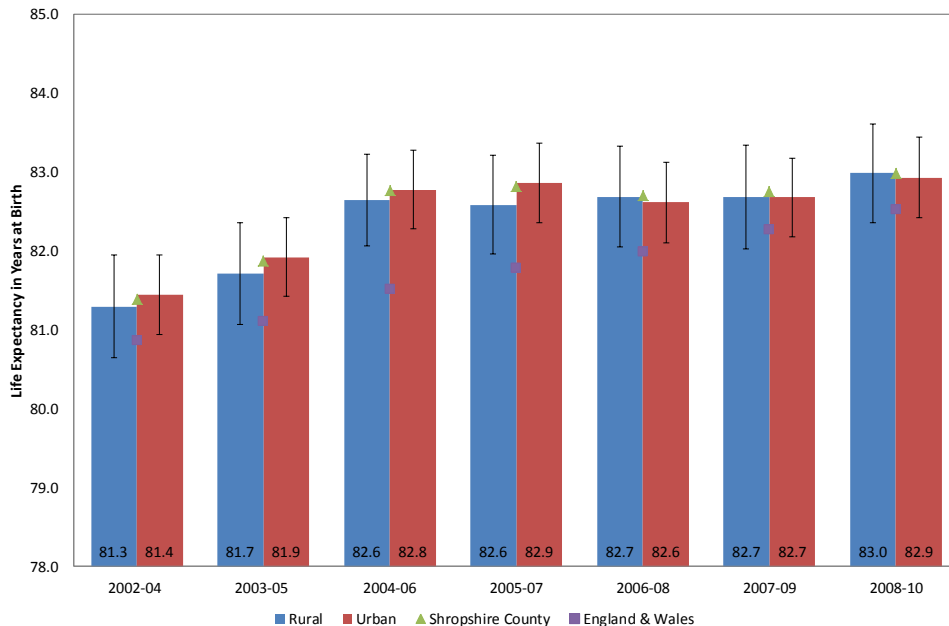
**Figure 7 Male 3-Year Rolling Life Expectancy 2002-2010 by urban & rural classification**



Source: Death extracts, Vital Statistics Table 3, ONS mid-year population estimates, National Statistics, Crown Copyright, Indices of Deprivation 2004, Office of the Deputy Prime Minister, Crown Copyright, Exeter System (GP Patient Registration System), Shropshire County Primary Care Trust, Calculated using the SEPHO Life Expectancy Calculator

In females there has also been an increase in life expectancy rates in both rural and urban areas of Shropshire. However, since 2004-06 life expectancy rates in both rural and urban areas has levelled out. There is no significant difference between life expectancy rates in urban or rural areas for women in Shropshire.

**Figure 8 Female 3-Year Rolling Life Expectancy 2002-2010 by urban & rural classification**



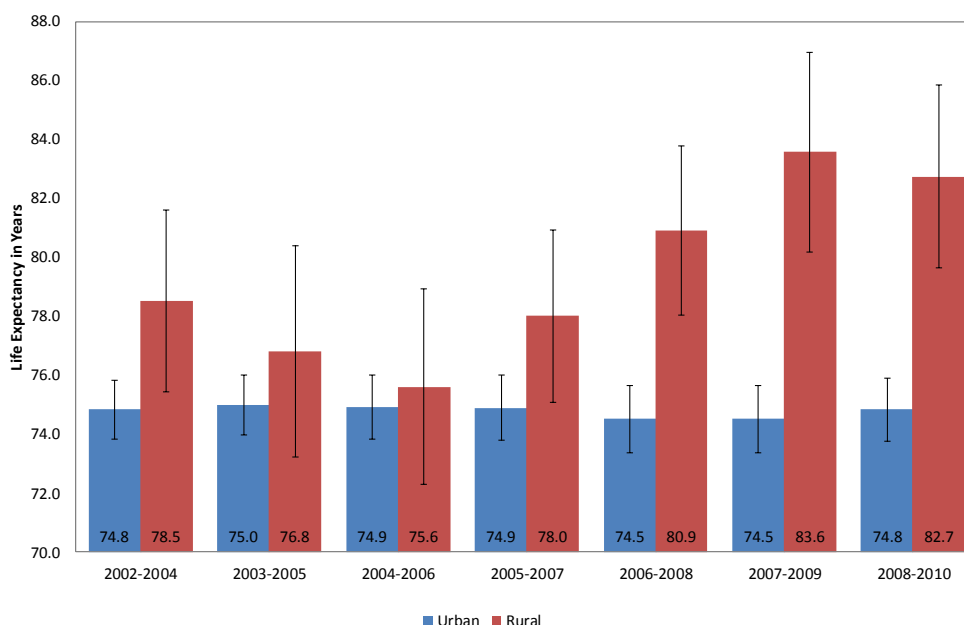
Source: Death extracts, Vital Statistics Table 3, ONS mid-year population estimates, National Statistics, Crown Copyright, Indices of Deprivation 2004, Office of the Deputy Prime Minister, Crown Copyright, Exeter System (GP Patient Registration System), Shropshire County Primary Care Trust, Calculated using the SEPHO Life Expectancy Calculator

## Life expectancy, rurality and deprivation

When looking at life expectancy rates in the most deprived fifth of areas in Shropshire there are differences between the urban and rural areas. However, due to the smaller populations in the rural areas some of these differences are not significant.

There has been an increase in the rural most deprived fifth of areas in Shropshire County, although this is not significant due to small numbers. The urban most deprived fifth of areas has not seen any change in life expectancy. In 2002-04 there was a similar life expectancy rate in the most deprived rural areas and the most deprived urban areas. By 2006-08 there was a significantly higher life expectancy rate in the most deprived rural areas compared to urban areas.

**Figure 9 Male life expectancy by rural and urban classification in most deprived fifth of the county**

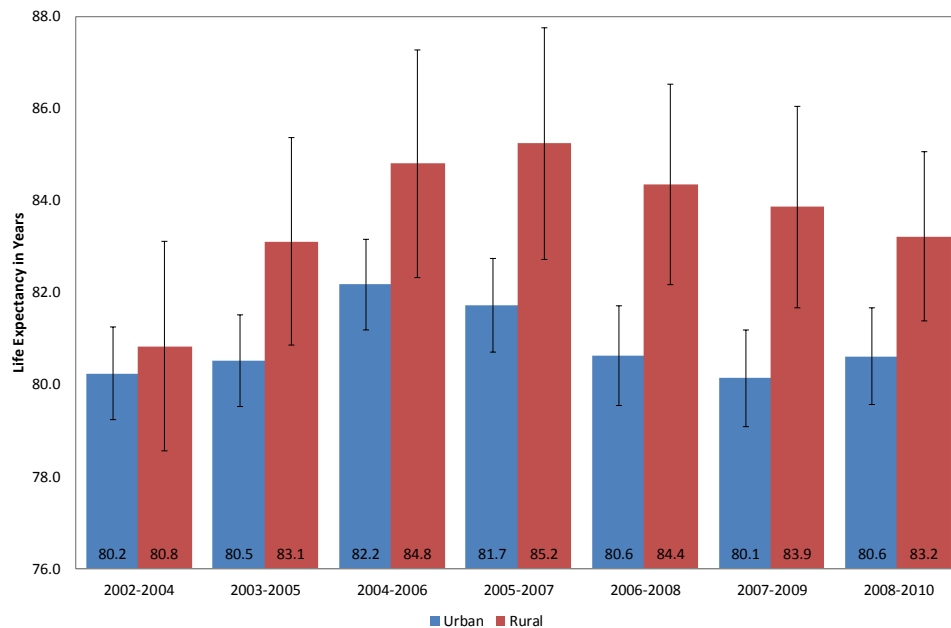


Source: Death extracts, Vital Statistics Table 3, ONS mid-year population estimates, National Statistics, Crown Copyright, Indices of Deprivation 2004, Office of the Deputy Prime Minister, Crown Copyright, Exeter System (GP Patient Registration System), Shropshire County Primary Care Trust, Calculated using the SEPHO Life Expectancy Calculator

Life expectancy rates for females in both the most deprived rural and urban areas have not changed significantly since 2002-04.

In 2002-04 there were similar rates for females in the most deprived fifth in rural areas and the most deprived fifth in urban areas. In 2006-08 and 2007-09 life expectancy rates in women were significantly higher in the rural areas compared to the urban most deprived fifth of areas. However, rates were similar once more in 2008-10.

**Figure 10 Female life expectancy by rural and urban classification in most deprived fifth of the county**



Source: *Death extracts, Vital Statistics Table 3, ONS mid-year population estimates, National Statistics, Crown Copyright, Indices of Deprivation 2004, Office of the Deputy Prime Minister, Crown Copyright, Exeter System (GP Patient Registration System), Shropshire County Primary Care Trust, Calculated using the SEPHO Life Expectancy Calculator*

## Summary of key points

### Male life expectancy

- Male life expectancy in Shropshire is significantly higher than the national average
- Overall life expectancy has increased since 2002-04
- There has been no significant change in life expectancy in males in the most deprived fifth of Shropshire since 2002-04
- Conversely males in the least deprived fifth of Shropshire have seen a significant increase in life expectancy since 2002-04
- Life expectancy in the least deprived areas is significantly higher than that of the most deprived areas (5.7 years difference)
- The gap in life expectancy in the most and least deprived areas has shown a continual increase since 2002-04
- Life expectancy has increased in both rural and urban areas overall, however there has been a faster rate of increase in rural areas
- Males living in rural parts of Shropshire have significantly higher life expectancy than those in urban areas
- In the most deprived fifth of areas in Shropshire there was significantly higher life expectancy in the rural most deprived fifth of areas compared to the urban most deprived areas, although the figures were similar between rural and urban between 2002-04 and 2005-07
- Life expectancy has increased in the most deprived fifth of rural areas, but has stayed the same in the most deprived fifth of urban areas

### *Female life expectancy*

- Life expectancy in women in Shropshire is significantly higher than the national average
- There has been an overall increase in female life expectancy in Shropshire since 2002-04
- There has been no significant change in female life expectancy in the most deprived fifth of areas since 2002-04
- Life expectancy in the least deprived fifth of areas has increased significantly since 2002-04
- There is significantly higher life expectancy in the least deprived compared to the most deprived fifth of areas in Shropshire (3.6 years difference)
- The gap in life expectancy between the least deprived fifth and the most deprived fifth of the population is increasing
- There were similar life expectancy figures for women living in rural and urban areas in Shropshire
- There was significantly higher life expectancy in women living in the rural most deprived fifth compared to the urban most deprived fifth, however the figure between rural and urban was similar between 2002-04 and 2005-07 and again in 2008-10
- There was no significant change in life expectancy in women in the most deprived fifth of urban areas or the most deprived fifth of rural areas